

Collapse of an ecological network in Ancient Egypt

Justin D. Yeakey^{a,b,c,1,2}, Mathias M. Pires^{d,2}, Lars Rudolf^{e,f,2}, Nathaniel J. Dominy^{g,h}, Paul L. Kochⁱ, Paulo R. Guimarães, Jr.^d, and Thilo Gross^{e,f}

^aDepartment of Ecology and Evolutionary Biology, University of California, Santa Cruz, CA 95064; ^bEarth to Oceans Research Group, Simon Fraser University, Burnaby, BC, Canada V5A 1S6; ^cSanta Fe Institute, Santa Fe, NM 87501; ^dDepartamento de Ecologia, Universidade de São Paulo, CEP 05508-090, São Paulo, SP, Brazil; ^eDepartment of Engineering and Mathematics, University of Bristol, Bristol BS8 1UB, United Kingdom; ^fMax Planck Institute for the Dynamics of Complex Systems, D-01187 Dresden, Germany; Departments of ^gAnthropology and ^hBiological Sciences, Dartmouth College, Hanover, NH 03755; and ⁱDepartment of Earth and Planetary Sciences, University of California, Santa Cruz, CA 95064

Edited by Justin S. Brashares, University of California, Berkeley, CA, and accepted by the Editorial Board August 11, 2014 (received for review May 8, 2014)

The dynamics of ecosystem collapse are fundamental to determining how and why biological communities change through time, as well as the potential effects of extinctions on ecosystems. Here, we integrate depictions of mammals from Egyptian antiquity with direct lines of paleontological and archeological evidence to infer local extinctions and community dynamics over a 6,000-y span. The unprecedented temporal resolution of this dataset enables examination of how the tandem effects of human population growth and climate change can disrupt mammalian communities. We show that the extinctions of mammals in Egypt were nonrandom and that destabilizing changes in community composition coincided with abrupt aridification events and the attendant collapses of some complex societies. We also show that the roles of species in a community can change over time and that persistence is predicted by measures of species sensitivity, a function of local dynamic stability. To our knowledge, our study is the first high-resolution analysis of the ecological impacts of environmental change on predator–prey networks over millennial timescales and sheds light on the historical events that have shaped modern animal communities.

community stability | historical ecology | trophic interactions | dynamic sensitivity | redundancy

Modern biological communities are vestiges, with rich ecological ancestries shaped by evolutionary, climatic, and more recently anthropogenic effects. Determining the consequences of past ecological disturbance will inform predictions of how modern communities may respond to ongoing anthropogenic or climatic pressures. Of particular importance are extinction cascades (1, 2), which can lead to trophic downgrading and community collapse by altering the structure (2) and relative strengths of interactions between species (3). Examining the long-term effects of extinctions on communities can only be accomplished by studying past ecosystems (4). The paleontological record and the remarkable historical record of species occurrences in Egypt document a biological community changing in the face of increasing aridification and human population densities (5). The timing and pattern of animal extinctions in Egypt are thus well suited to illuminate our understanding of how the structure and functioning of biotic communities are altered by changing climatic and anthropogenic impacts.

The Nile Valley north of Aswan is known for its intense heat, low rainfall, and relatively sparse vegetation. In fact, the last 2,750 km of the Nile is devoid of water-bearing tributaries and surrounded by desert with an average rainfall of 3.4 cm/y. The Egyptian landscape in the Late Pleistocene/early Holocene was very different; during the African Humid Period (AHP) (14,800–5,500 y B.P.), the region had a cooler, wetter climate driven by heavy monsoonal rains (5). These factors contributed to a diverse assemblage of mammals that bears a strong resemblance to communities in East Africa today.

Termination of the AHP was associated with increasingly weak summer monsoons (6) and the disappearance of many Egyptian species, including spotted hyenas, warthogs, zebra, wildebeest, and water buffalo (7–10), as well as the onset of dense human settlements in the region (11). A sharp increase in aridification

~5,000 y B.P. (5, 11) attended the fall of the Uruk Kingdom in Mesopotamia (5, 12), but it might have catalyzed the rise of the Egyptian Pharaonic state (12, 13). Another aridification pulse ~4,170 ± 50 y B.P. (5) coincided with the Egyptian First Intermediate Period (~4,140 y B.P.), an interval that is distinguished by failed flooding of the Nile (14) and rapid dynastic successions (15). Other potential aridity-induced political instabilities are evident at this time, including the collapse of the Akkadian empire (16) and the decline of urban centers in the Indus Valley (17). Finally, a third aridification pulse is evident in eastern Mediterranean sediments at ~3,000 y B.P. (5). This event is associated with widespread famines in Egypt and Syria (18, 19) and the end of the New Kingdom in Egypt (14) and the Ugarit Kingdom in Babylon (18).

The historical consequences of these aridification events are an enduring, and often contentious, topic of debate (14, 17, 20–22). At the same time, the historical ecology of Egyptian animal communities has been documented extensively (7, 23–25). These parallel efforts include descriptions of animal occurrences in paleontological, archeological, and historical records, as well as their artistic representations on tombs (26), knife blades (27), and funerary palettes (28), compiled by D. J. Osborn and J. Osbornová (8). Artistic representations of mammals are identifiable at the species taxonomic level (8, 27), with historical sources noting whether fauna were native or imported, or even domesticated (8). For example, Late Predynastic ceremonial palettes depict lions, wild dogs, and many species of ungulates including oryx, hartebeest, and giraffe (Fig. 1), none of which exist in Egypt today. Here, we combine these records of species occurrence with mathematical modeling to examine the patterns and consequences of extinctions during 6,000 y of Egyptian history (Fig. 2; see *Supporting Information, section I*, for detailed species occurrence information).

Significance

The composition of animal communities directly impacts the stability of ecosystems. Here, we use historical information of species extinctions in Egypt over 6,000 years to reconstruct predator–prey interactions and determine to what extent observed changes in species composition influence predictions of community stability. Our study reveals that the roles of species and the stability of the community have fundamentally changed throughout the Holocene, and provides compelling evidence that local dynamic stability is informative of species persistence over time.

Author contributions: J.D.Y., M.M.P., L.R., N.J.D., and P.L.K. designed research; J.D.Y., M.M.P., L.R., and P.R.G. performed research; J.D.Y., M.M.P., L.R., P.R.G., and T.G. analyzed data; and J.D.Y., M.M.P., N.J.D., P.L.K., P.R.G., and T.G. wrote the paper.

The authors declare no conflict of interest.

This article is a PNAS Direct Submission. J.S.B. is a Guest Editor invited by the Editorial Board.

¹To whom correspondence should be addressed. Email: jdyakey@gmail.com.

²J.D.Y., M.M.P., and L.R. contributed equally to this work.

This article contains supporting information online at www.pnas.org/lookup/suppl/doi:10.1073/pnas.1408471111/-DCSupplemental.

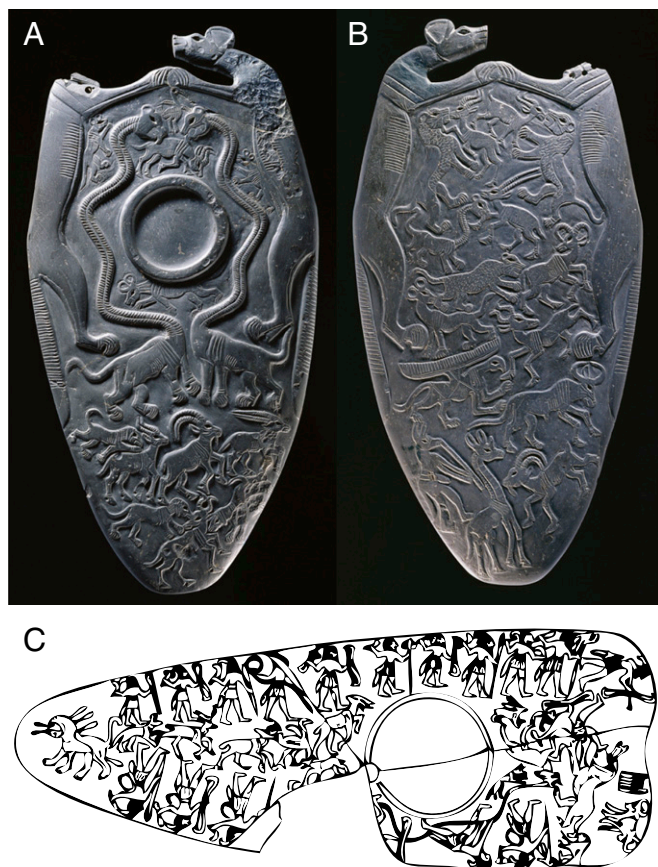


Fig. 1. Ancient Egyptian depictions of familiar predator-prey interactions. The (A) obverse and (B) reverse surfaces of a siltstone ceremonial palette accessioned (no. E.3924) in the Ashmolean Museum of Art and Archaeology, University of Oxford. The palette (known informally as the Ashmolean or two dog palette) was recovered from the main deposit at Hierakonpolis (~5,150 y B.P.). The object is surmounted and framed by two wild dogs (*Lycaon pictus*) clasping one another's paws. Other unambiguous species include ostrich, hartebeest, wildebeest, ibex, oryx, and giraffe. Some fictitious animals are also depicted, including serpent-necked panthers, or "serpopards", and a plausible griffin; these animals were excluded from our analysis. Photographs reproduced with permission (Copyright, Ashmolean Museum). (C) Line drawing of a mudstone ceremonial palette accessioned (no. EA20790) in the British Museum. The provenance of this Late Predynastic palette (known informally as the hunters' palette) is uncertain. The reliefs depict human hunters stalking and capturing lions, gazelles, hartebeest, and an ostrich with bows, spears, throwsticks, and lariat. For recent scholarship on, and interpretation of, these images, see Davis (57).

Patterns of Extinction

A total of 37 large-bodied (>4-kg) mammalian species are documented in Late Pleistocene/early Holocene Egypt, whereas only 8 remain today (24). Here, we focus on ungulates and their potential mammalian predators, as these animals are known to form a dynamically cohesive component of many food webs (3, 29–31), and binned their occurrences in the time periods shown in Fig. 2. To determine whether the extinction of species in the historical record could be predicted by random removal, we conducted randomized extinction simulations (5×10^5 replicates), where the number of extinctions at each time interval was conserved. Our analysis shows that changes in predator and prey richness—summarized by calculating the predator-prey ratio—are not predicted by random extinction trajectories until recent history (Fig. 3A). The ratio of predators to prey increased gradually from the Late Pleistocene to the end of the New Kingdom (part of the observed increase in the predator-prey ratio after 4,140 y B.P. is due to the appearance of

cheetah *Acinonyx jubatus*; Figs. 2 and 3A), followed by a decline from ~3,035 y B.P. to 100 y B.P.

To evaluate the effects of uncertainty in the timing of extinctions on the predator-prey ratio, we allowed the first and last occurrence of each species to vary probabilistically according to two different treatments: (i) the first/last occurrence could vary among the time bins directly before and after the recorded event; (ii) the first/last occurrence could vary among two time bins directly before and after the recorded event (illustrated in Fig. 2). To determine how uncertainty influenced the predator-prey ratio, we simulated the extinction trajectories of species over time, where the occurrence of each species was drawn randomly and independently according to each extinction probability treatment (5,000 replicates; Fig. 3A). This uncertainty introduces error in the timing of extinctions of ± 286 and ± 580 y (averaged across time bins), for treatments i and ii, respectively. Importantly, we find that this added uncertainty does not alter the qualitative nature of the predator-prey ratio over time.

The loss of large-bodied herbivores, such as elephants, giraffes, native camels, oryx, and two species of kob, characterizes the earliest documented extinctions in Egypt. Some of these extinctions could have been caused by competitive displacement; for instance, Churcher (7) suggested that wild asses (*Equus asinus*), which appeared in the early-mid Holocene, might have supplanted zebras (*Equus grevyi* and *Equus quagga*, the latter formerly *Equus burchelli*). Predator extinctions follow a similar pattern, with larger-bodied species disappearing earlier. Egyptian artisans depicted two distinct lion morphotypes (possibly subspecies) (32) before the Third Dynasty: a short-maned and a larger long-maned lion, which we treat separately. The long-maned lion was depicted until the end of the Second Dynasty (~4,645 y B.P.), and the short-maned lion until the end of the Twentieth Dynasty (~3,035 y B.P.; a span that excludes depictions of tame or imported lions). Compellingly, this latter date predates accounts of diminishing lion populations in classical antiquity. For example, lions reportedly attacked Xerxes and his consort in 2,430 y B.P., a time when lions were common in Greece (according to Herodotus, 2,434–2,375 y B.P.). A little over a century later (2,250 y B.P.), Aristotle reported that lions were rare (33).

The most dramatic shifts in the predator-prey ratio occurred ~5,050, 4,140, 3,520, 3,035, and 100 y B.P. (Fig. 3A). Although the direction of the shift at 100 y B.P. is prone to observational error, it is coincident with population growth and industrialization in Egypt (Fig. S1). Three of the remaining four shifts are contemporaneous with extreme environmental and historical events: (i) the aridification pulse associated with beginning of the Dynastic Period in Egypt (5, 12) (~5,000 y B.P.); (ii) the aridification pulse associated with the collapse of the Old Kingdom in Egypt (~4,170 \pm 50 y B.P.); (iii) the aridification pulse associated with the fall of the New Kingdom in Egypt (19) (~3,000 y B.P.).

Shifts in the predator-prey ratio reveal a long-term change in community structure: the reduction of herbivore richness beginning ~5,000 y B.P. followed by a decline in predator richness beginning ~3,035 y B.P. Although we cannot identify the causes of extinction at any single time interval, the co-occurring changes in climate, community composition, and human societies suggest three potential mechanisms that could have resulted in the observed patterns. First is the potential decline in herbivore richness due to human overkill followed by an indirect impact on predator richness. Egyptian peoples shifted from mobile pastoralism after the AHP to agriculture (12, 34), and subsistence hunting subsidized by agriculture (25, 35) may have increased overall mortality risks. Differences in species-specific traits and hunting preferences (cf. ref. 36) would then have contributed to shape patterns of extinction. Second, herbivore and carnivore richness may have been negatively impacted by bottom-up forcing due to climate-driven limitation in primary productivity. Third, resource or habitat competition with humans in the Nile floodplain, driven by an increased reliance on agriculture (34), and potentially exacerbated by decreased nutrient transport from species extinctions (35), might have resulted in

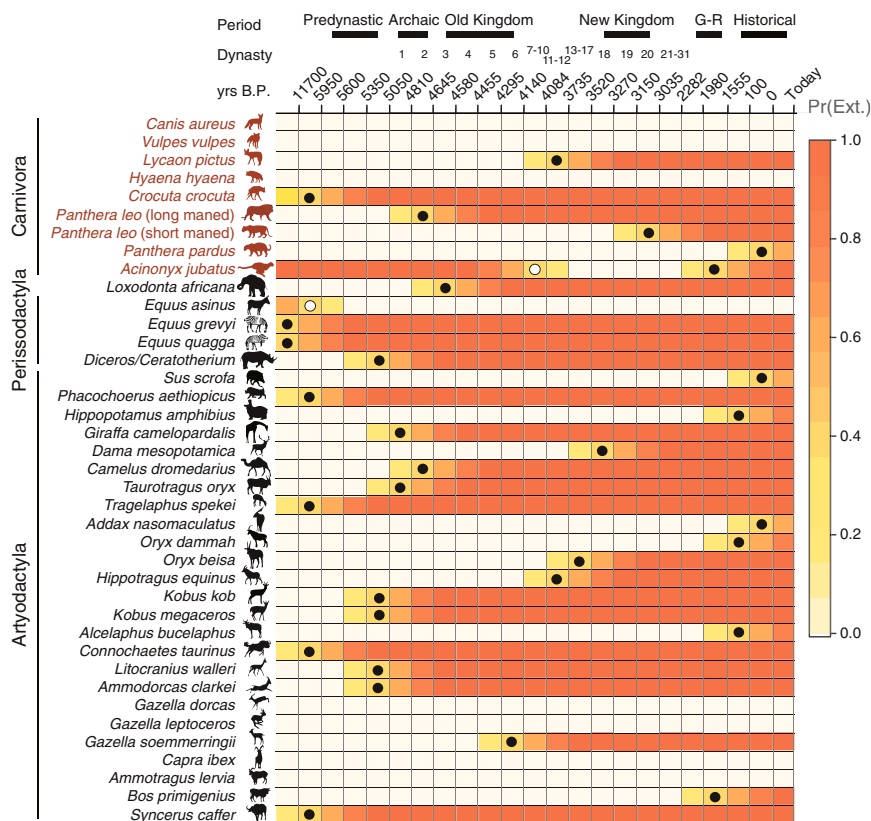


Fig. 2. The presence/absence of large-bodied mammalian species across six millennia of Egyptian history. All dates are in years before present, thus “years before 1950 A.D.,” such that we distinguish 0 y B.P. (1950 A.D.) from “today” (established as 2010 A.D.). The first time bin does not have a definitive starting date, generally representing the Late Pleistocene. The white circles denote the first time interval of a recorded species occurrence if it was not initially present; the black circles denote the last time interval of a recorded species occurrence if it is not extant. The color gradient is the probability that a given species is locally extinct for the treatment allowing first/last occupation to vary across two time bins before and after the recorded event. G-R, Greco-Roman.

declining herbivore richness, precipitating a cascading impact on the predator community.

The Dynamics of Collapse

As the composition of an ecosystem is altered, the potential dynamics of the community are bound to change (37). To understand how historical extinctions impacted the dynamics of Egyptian communities, we used predator–prey body mass ratios to calculate both the probability and strength of trophic interactions, thus reconstructing predator–prey interaction networks for each time bin (38) (*Materials and Methods* and [Supporting Information, sections II–IV](#)). We used generalized dynamical models to determine dynamic stability over time, thus requiring only basic assumptions of the functional relationships governing interspecific and intraspecific interactions between and among species (37, 39). Across all time bins, 2×10^5 predator–prey networks were constructed (for parameter values and ranges, see [Table S1](#)), thus accounting for potential variability in species interactions, interaction strengths, and intraspecific and interspecific functional responses (37). We then calculated the proportion of dynamically stable webs (PSW), the impact of a given species i 's presence on PSW, and the magnitude of species-specific responses to perturbations.

Because predator–prey interactions are a function of body size, the structure of the Egyptian trophic network is relatively robust to changes in species presence/absence over time (Fig. S2; cf. ref. 40). Despite the robustness of network structure, our results show that dynamic stability, measured as PSW, was highly sensitive to changes in the animal community, and reveal that extinctions in Egypt were inherently destabilizing (Fig. 3B). Moreover, the loss of species in the last 150 y had a disproportionately large impact

on PSW (Fig. 3B), which is a compelling indication that the effects of recent disturbances on animal communities may be more destabilizing relative to those before the modern era. Stability analyses of random food webs (41) have generally shown that the loss of species richness increases PSW (37, 42), fueling the diversity–stability debate (43). In contrast, our analyses combining generalized modeling with a realistic interaction network structure reveal that stability decreases with species loss, and this pattern is robust against uncertainty in the timing of both historical and recent extinctions (Fig. 3B).

In the modern Egyptian predator-prey network, there are a small number of crucial species (44) whose presence strongly and positively impacts stability, which is determined by calculating the difference in PSW (ΔPSW_i) for the system with and without each species i (2×10^8 replicates). Stabilizing species include gazelles, ibex, and Barbary sheep, all of which are smaller-bodied herbivores serving as important prey resources for the remaining predators (Fig. 4A and Fig. S3). Some of these species (e.g., *Gazella leptoceros*) are critically endangered (45). Although the impact of species i 's presence on PSW is correlated with body size (Fig. S4), as we observe the community earlier in time, the presence of all species has less impact on PSW (such that ΔPSW_i is closer to zero), suggesting that the historical community was more robust, presumably due to greater redundancy in prey species. Importantly, the decline in PSW essentially mirrors deviations in ΔPSW_i away from zero, meaning that earlier communities were more stable and less impacted by species removal, whereas recent communities are less stable and more impacted by species removal. Together, these findings indicate an increase in vulnerability over time (Fig. S5). We hypothesize that the vulnerability of many contemporary

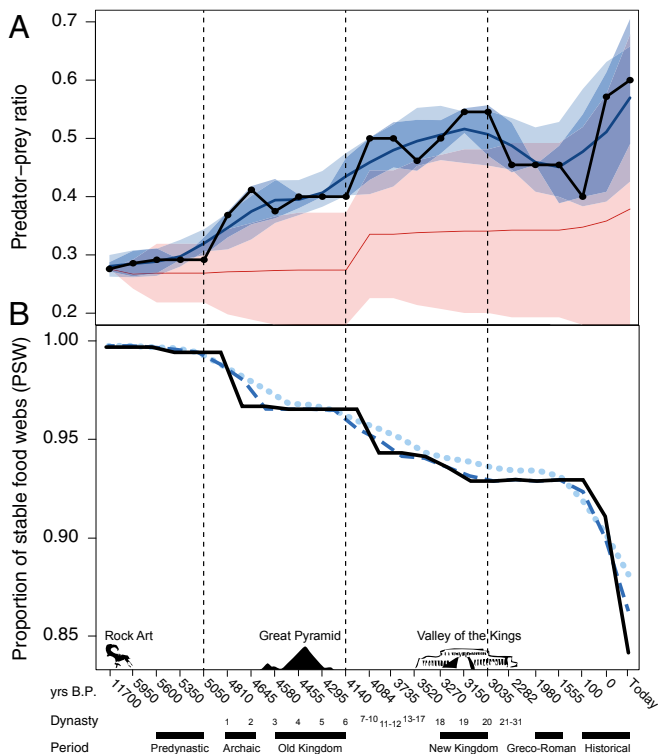


Fig. 3. Changes in the predator–prey ratio and dynamic stability of the Egyptian trophic network over time. (A) The predator–prey ratio is shown (black line) against simulations where extinction is treated probabilistically, incorporating error of 286 (dark blue polygon) and 580 (lighter blue polygon) years before and after first and last occurrences (the mean is denoted by the blue line). Random extinction trajectories are shown by the red line and polygon (mean and SD of 5×10^5 replicates, respectively). (B) Proportion of stable webs (2×10^5 replicates) for the Egyptian community (black), and with first and last appearances treated probabilistically, incorporating error of 286 (dark blue, dashed line) and 580 (lighter blue dotted line) years before and after the first and last occurrences. The vertical dashed lines denote the major climatic events at $\sim 5,050$, 4,170, and 3,035 y B.P.

animal communities (3) may be exacerbated by recent erosion of species richness, which our data suggest eliminates the functional redundancy of lower trophic-level species.

The primary productivity needed to support a diverse animal community is expected to have diminished as the Nile Valley became increasingly arid throughout the Holocene (14). Because changes in productivity can alter population-level responses to species interactions, we performed a sensitivity analysis to determine whether and to what extent changes in primary productivity influence estimates of PSW. We address changing habitat productivity by incorporating the following assumptions: (i) when productivity is high, the per-capita contribution of herbivores to population growth increases, such that the impact of herbivore density on growth is elevated; (ii) because prey are plentiful, the growth of predator populations is not limited by prey density (46). Conversely, when primary productivity decreases (as is assumed to have occurred over the Holocene), herbivore population growth becomes nutrient limited, such that changes in herbivore density have a smaller impact on population growth, whereas predator population growth becomes limited by herbivore density. This formalization allows us to explore how our results are impacted by changes in the functional relationships between population growth and its drivers due to changes in primary productivity at every time period by instituting the following constraints: as productivity decreases, the sensitivity of herbivore population growth to herbivore density (ϕ in the generalized modeling framework; [Supporting](#)

Information, section V) goes to 0, whereas the sensitivity of predator population growth to herbivore density ($\gamma = 1 - \phi$) goes to unity; for increases in productivity, this relationship is reversed. We find that increasing productivity is always destabilizing, which is expected in accordance with the well-known “paradox of enrichment” (47). Of more interest here is that lowering productivity does not have a qualitative impact on estimates of PSW (Fig. 4B), suggesting that changes in PSW over time were not solely driven by changes in productivity itself, but were chiefly influenced by changes in community composition and species interactions.

Predicting Persistence

Understanding the reciprocal feedbacks between a changing environment on the structure and functioning of ecosystems is

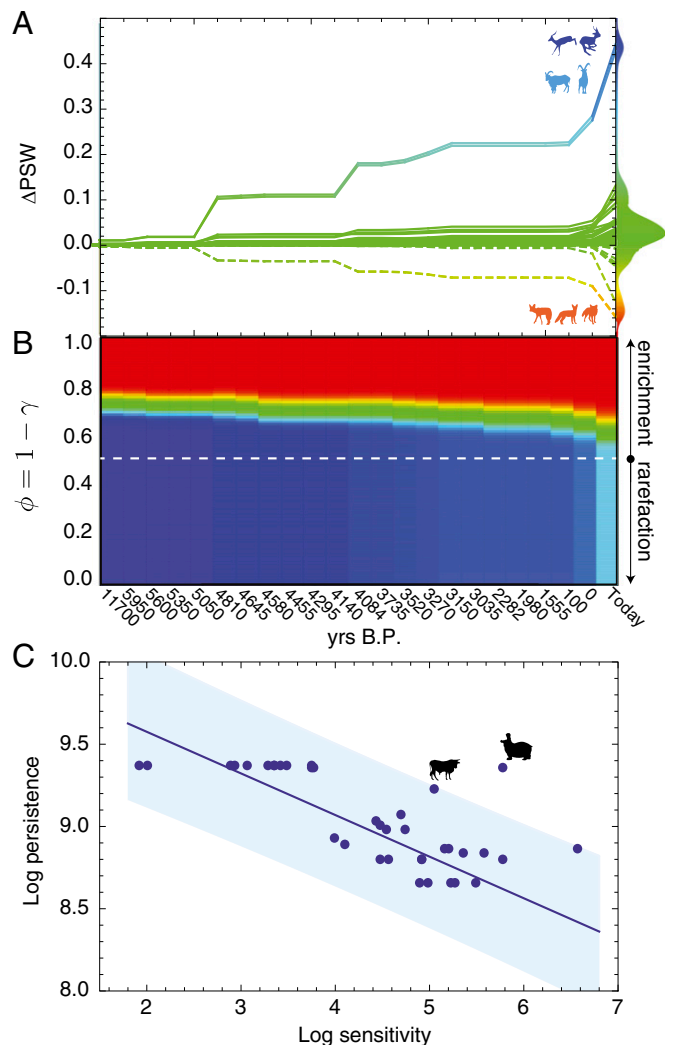


Fig. 4. (A) The mean change in PSW (Δ PSW) as a function of species presence over time. Predator presence destabilizes trophic network (stippled lines); prey presence stabilizes trophic networks (solid lines). Histograms on the y axes represent densities of Δ PSW values for the earliest and latest time intervals, and colors scale to the y axis. (B) PSW (colors scaled from red, PSW = 0, to blue, PSW = 1) as a function of the sensitivity of herbivore growth to changes in herbivore density (ϕ ; y axis) over time (x axis). The white stippled line denotes $\phi = 0.5$ used for the dynamic analysis (Table S1), such that $\phi > 0.5$ indicates nutrient enrichment (productivity increase), and $\phi < 0.5$ indicates nutrient rarefaction (productivity decrease). (C) Species sensitivity vs. persistence since the Pleistocene–Holocene transition (11.7 ky B.P.). Linear regression model: $R^2 = 0.36$, $p \ll 0.005$; blue shaded region is the 75% confidence interval.

a primary goal in modern ecological research (48). For instance, short-term environmental changes may be responsible for altering community structure in both limnetic invertebrate (40) and terrestrial vertebrate food webs (49), whereas shifting thermal baselines and mismatches in phenology have been observed to directly alter the composition of terrestrial communities (50, 51). Theoretical work suggests that climate warming may have a large impact on trophic chain length and top-down vs. bottom-up dynamics, where higher trophic species are predicted to be at greatest risk (52). However, to what extent the dynamical consequences of perturbed ecological communities impact species persistence is largely unknown, and this is partly due to a lack of knowledge regarding how animal assemblages and species interactions change over time (53).

Although we cannot ascribe causality to any single extinction event, because the persistence of each species over time is known, we can determine whether extinction is predictable. Perturbations are by definition disruptive, and their effects can be explored with respect to the system as a whole (PSW), or with respect to each species in the system. In general, we would assume that species strongly reactive to external perturbations would have lower persistence, thus being prone to extinction. Here, we determine whether the sensitivities of species to external perturbations can be used to predict persistence, defined as the period after the Pleistocene–Holocene transition (11.7 ky B.P.) of Egyptian occupation. We define the sensitivity of a species i (Se_i) (44) by the magnitude of its response to a press perturbation, introduced by altering the community steady state (54) (see [Supporting Information, section VI](#), for a formal derivation). Our results show that sensitivity is strongly predictive of persistence, and therefore extinction risk: species less sensitive to change are more likely to survive longer periods of time (Fig. 4C and Fig. S6). Of note are two outliers for which temporal persistence is greater than predicted by Se_i (silhouettes in Fig. 4C): hippopotamus (*Hippopotamus amphibius*), which rely primarily on river resources that are not included in the dynamic model, and wild cattle (*Bos primigenius*), potentially facilitated by association with domesticates (55). Our results confirm the generally accepted expectation of higher extinction risks for larger-bodied mammalian species (56) and indicate that measures derived from local stability analysis are predictive of these risks over millennial timescales.

The trajectory of extinctions over 6,000 y of Egyptian history is a window into the influence that both climatic and anthropogenic

impacts have on animal communities. The atypically strong effects that species extinctions have had on the stability of the contemporary Egyptian predator–prey network is due to the nonrandom but steady erosion of species richness over time. Our results directly fuel hypotheses on whether and to what extent cascading extinctions, changes in the sensitivity to perturbations, and the consequent decline of community stability as the result of both climate change and human impact, have contributed to the collapse of modern animal communities.

Materials and Methods

We compiled data on species occurrences from paleontological, archeological, and historical information spanning the last 6,000 y of Egyptian history. All dates are in years before present (y B.P.), thus “years before 1950 A.D.,” such that we distinguish 0 y B.P. (1950 A.D.) from “today” (established as 2010 A.D.). We used body mass ratios between predators and prey to determine the probability that a trophic link exists between species i and j [$\Pr(\ell_{ij} = 1)$], where $\Pr(\ell_{ij} = 1) = p/(1 + p)$, given $p = \exp[a_1 + a_2 \log(\text{MR}) + a_3 \log^2(\text{MR})]$, and MR is the log-transformed ratio of predator to prey biomass (38). We established this model on the Serengeti food web ($a_1 = 1.41$, $a_2 = 3.73$, and $a_3 = -1.87$), from which 74% of trophic links (both presence and absence) were predicted accurately. We capture the dynamics of an N species food web by N equations of the following form: $\dot{X}_i = S_i(X_i) + \eta_i F_i(X_1, \dots, X_N) - M_i(X_i) - \sum_{n=1}^N L_{n,i}(X_1, \dots, X_N)$, for $i = 1 \dots N$, where η_i is the transfer efficiency of predator growth from prey consumption; and S_i , F_i , M_i , and $L_{n,i}$ are unspecified functions that describe the growth of species i by primary production, the growth of species i by predation, the loss of species i due to natural mortality, and the loss of species i due to predation by species n , respectively. Local stability is computed by linearizing the nonlinear equation-system around the steady state in question. The result is the so-called Jacobian matrix that captures the system's response to perturbations in the vicinity of the steady state. For the generalized model, one formally computes the linearization for all feasible steady states (37). We thereby obtain a Jacobian matrix that captures the dynamical stability of every steady state in the whole class of models under consideration, as a function of a number of unknown, but directly interpretable ecological parameters. For additional details, see [Supporting Information, sections II–IV](#).

ACKNOWLEDGMENTS. We thank S. Allesina, H. Aufderheide, M. P. Beakes, C. E. Chow, J. A. Estes, M. Mangel, J. W. Moore, M. Novak, C. C. Phillis, and three anonymous reviewers for helpful discussions and comments. We also thank the Ashmolean Museum for photographic reproduction rights (Fig. 1 A and B) and the British Museum for its free image service (image AN35923001 was the basis for Fig. 1C). We also owe a debt of gratitude to C. S. Churcher and the late D. L. Osborn for the work that inspired this research. Funding was provided by the National Science Foundation Graduate Research Fellowship (J.D.Y.) and São Paulo Research Foundation (Fundação de Amparo à Pesquisa do Estado de São Paulo) (M.M.P. and P.R.G.).

1. Pace ML, Cole JJ, Carpenter SR, Kitchell JF (1999) Trophic cascades revealed in diverse ecosystems. *Trends Ecol Evol* 14(12):483–488.
2. Eklöf A, Ebenman B (2006) Species loss and secondary extinctions in simple and complex model communities. *J Anim Ecol* 75(1):239–246.
3. Estes JA, et al. (2011) Trophic downgrading of planet Earth. *Science* 333(6040):301–306.
4. Yeakel JD, Guimarães PR, Jr, Bocherens H, Koch PL (2013) The impact of climate change on the structure of Pleistocene food webs across the mammoth steppe. *Proc Roy Soc B* 280(1762):20130239.
5. Bernhardt CE, Horton BP, Stanley JD (2012) Nile Delta vegetation response to Holocene climate variability. *Geology* 40(7):615–618.
6. Adkins J, deMenocal PB, Eshel G (2006) The “African humid period” and the record of marine upwelling from excess ^{230}Th in Ocean Drilling Program Hole 658C. *Paleoceanography* 21(4):PA4203.
7. Churcher CS (1972) *Late Pleistocene Vertebrates from Archaeological Sites in the Plain of Kom Ombo, Upper Egypt* (Royal Ontario Museum, Toronto).
8. Osborn DJ, Osbornová J (1998) *The Mammals of Ancient Egypt* (Aris and Phillips, Oxford).
9. Linstädter J, Kröpelin S (2004) Wadi Bakht revisited: Holocene climate change and prehistoric occupation in the Gifl Kebir Region of the Eastern Sahara, SW Egypt. *Geoarchaeology* 19(8):753–778.
10. Heller R, Brüniche-Olsen A, Siegmund HR (2012) Cape buffalo mitogenomics reveals a Holocene shift in the African human-megafauna dynamics. *Mol Ecol* 21(16):3947–3959.
11. Kuper R, Kröpelin S (2006) Climate-controlled Holocene occupation in the Sahara: Motor of Africa's evolution. *Science* 313(5788):803–807.
12. Brooks N (2006) Cultural responses to aridity in the Middle Holocene and increased social complexity. *Quat Int* 151(1):29–49.
13. Adams B (1997) *Protodynastic Egypt* (Osprey Publishing, Buckinghamshire, UK).
14. Butzer KW (2012) Collapse, environment, and society. *Proc Natl Acad Sci USA* 109(10):3632–3639.
15. Trigger BG (1983) *Ancient Egypt: A Social History* (Cambridge Univ Press, Cambridge, UK).
16. Cullen H, et al. (2000) Climate change and the collapse of the Akkadian empire: Evidence from the deep sea. *Geology* 28(4):379–382.
17. Dixit Y, Hodell DA, Petrie CA (2014) Abrupt weakening of the summer monsoon in northwest India ~4100 yr ago. *Geology* 42(4):339–342.
18. Kaniewski D, et al. (2008) Middle East coastal ecosystem response to middle-to-late Holocene abrupt climate changes. *Proc Natl Acad Sci USA* 105(37):13941–13946.
19. Roberts N, Eastwood WJ, Kuzucuoğlu C, Fiorentino G, Caracuta V (2011) Climatic, vegetation and cultural change in the eastern Mediterranean during the mid-Holocene environmental transition. *Holocene* 21(1):147–162.
20. deMenocal PB (2001) Cultural responses to climate change during the late Holocene. *Science* 292(5517):667–673.
21. deMenocal PB (2004) African climate change and faunal evolution during the Pliocene–Pleistocene. *Earth Planet Sci Lett* 220(1–2):3–24.
22. Butzer KW, Endfield GH (2012) Critical perspectives on historical collapse. *Proc Natl Acad Sci USA* 109(10):3628–3631.
23. Churcher CS (1993) *Equus grevyi*. *Mamm Species* 453(1):1–9.
24. Osborn DJ, Helmy I (1980) *The Contemporary Land Mammals of Egypt (Including Sinai)*. (Field Museum of Natural History, Chicago).
25. Hendrickx S, Riemer H, Förster F, Darnell JC (2009) Late Predynastic–Early Dynastic rock art scenes of Barbary sheep hunting from Egypt's Western Desert. From capturing wild animals to the women of the “Acacia House.” *Desert Animals in the Eastern Sahara: Status, Economic Significance and Cultural Reflection in Antiquity. Proceedings of an Interdisciplinary ACACIA Workshop Held at the University of Cologne*, ed Riemer H (Heinrich-Barth-Institut, Cologne, Germany), pp 14–15.
26. Davies N (1943) *The Tomb of Rekh-mi-Re at Thebes* (Arno Press, New York).
27. Churcher CS (1984) Zoological study of the ivory knife handle from Abu Zaidan. *Predynastic and Archaic Egypt in the Brooklyn Museum*, ed Needier W (Brooklyn Museum, Brooklyn, NY), pp 152–169.

28. Spencer AJ (1980) *Catalogue of Egyptian Antiquities in Ancient Egypt V: Early Dynastic Objects* (British Museum Publications, London).
29. Olff H, et al. (2009) Parallel ecological networks in ecosystems. *Philos Trans R Soc Lond B Biol Sci* 364(1524):1755–1779.
30. Baskerville EB, et al. (2011) Spatial guilds in the Serengeti food web revealed by a Bayesian group model. *PLoS Comput Biol* 7(12):e1002321.
31. Yeakel JD, Guimarães PR, Jr, Novak M, Fox-Dobbs K, Koch PL (2012) Probabilistic patterns of interaction: The effects of link-strength variability on food web structure. *J R Soc Interface* 9(77):3219–3228.
32. Barnett R, et al. (2014) Revealing the maternal demographic history of *Panthera leo* using ancient DNA and a spatially explicit genealogical analysis. *BMC Evol Biol* 14(1):70.
33. Schaller GB (1972) *The Serengeti Lion: A Study of Predator-Prey Relations* (Univ of Chicago Press, Chicago).
34. Hassan FA (1985) Radiocarbon chronology of Neolithic and Predynastic sites in Upper Egypt and the Delta. *Afr Archaeol Rev* 3(1):95–115.
35. Doughty CE, Wolf A, Malhi Y (2013) The impact of large animal extinctions on nutrient fluxes in early river valley civilizations. *Ecosphere* 4(12):art148.
36. Rowcliffe JM, Cowlishaw G, Long J (2003) A model of human hunting impacts in multi-prey communities. *J Appl Ecol* 40(5):872–889.
37. Gross T, Rudolf L, Levin SA, Dieckmann U (2009) Generalized models reveal stabilizing factors in food webs. *Science* 325(5941):747–750.
38. Rohr RP, Scherer H, Kehrl P, Mazza C, Bersier LF (2010) Modeling food webs: Exploring unexplained structure using latent traits. *Am Nat* 176(2):170–177.
39. Yeakel JD, Stiefs D, Novak M, Gross T (2011) Generalized modeling of ecological population dynamics. *Theor Ecol* 4(2):179–194.
40. Schneider DW (1997) Predation and food web structure along a habitat duration gradient. *Oecologia* 110(4):567–575.
41. Williams RJ, Martinez ND (2000) Simple rules yield complex food webs. *Nature* 404(6774):180–183.
42. May RM (1972) Will a large complex system be stable? *Nature* 238(5364):413–414.
43. McCann KS (2000) The diversity-stability debate. *Nature* 405(6783):228–233.
44. Aufderheide H, Rudolf L, Gross T, Lafferty KD (2013) How to predict community responses to perturbations in the face of imperfect knowledge and network complexity. *Proc Roy Soc B* 280(1773):20132355.
45. El Alqamy H, El Din SB (2006) Contemporary status and distribution of gazelle species (*Gazella dorcas* and *Gazella leptoceros*) in Egypt. *Zool Middle East* 39(1):5–16.
46. Gross T, Feudel U (2006) Generalized models as a universal approach to the analysis of nonlinear dynamical systems. *Phys Rev E Stat Nonlin Soft Matter Phys* 73(1 Pt 2):016205.
47. Rosenzweig ML (1971) Paradox of enrichment: Destabilization of exploitation ecosystems in ecological time. *Science* 171(3969):385–387.
48. Woodward G, Perkins DM, Brown LE (2010) Climate change and freshwater ecosystems: Impacts across multiple levels of organization. *Philos Trans R Soc Lond B Biol Sci* 365(1549):2093–2106.
49. Lurgi M, López BC, Montoya JM (2012) Climate change impacts on body size and food web structure on mountain ecosystems. *Philos Trans R Soc Lond B Biol Sci* 367(1605):3050–3057.
50. Walther GR, et al. (2002) Ecological responses to recent climate change. *Nature* 416(6879):389–395.
51. Sinervo B, et al. (2010) Erosion of lizard diversity by climate change and altered thermal niches. *Science* 328(5980):894–899.
52. Brose U, et al. (2012) Climate change in size-structured ecosystems. *Philos Trans R Soc Lond B Biol Sci* 367(1605):2903–2912.
53. Berg MP, et al. (2010) Adapt or disperse: Understanding species persistence in a changing world. *Glob Change Biol* 16(2):587–598.
54. Novak M, et al. (2011) Predicting community responses to perturbations in the face of imperfect knowledge and network complexity. *Ecology* 92(4):836–846.
55. Stock F, Gifford-Gonzalez D (2013) Genetics and African cattle domestication. *Afr Archaeol Rev* 30(1):51–72.
56. Cardillo M, et al. (2005) Multiple causes of high extinction risk in large mammal species. *Science* 309(5738):1239–1241.
57. Davis W (1992) *Masking the Blow: The Scene of Representation in Late Prehistoric Egyptian Art* (Univ of California Press, Berkeley, CA).